

VEM Motors K21R 225 M4 HW

Specifications

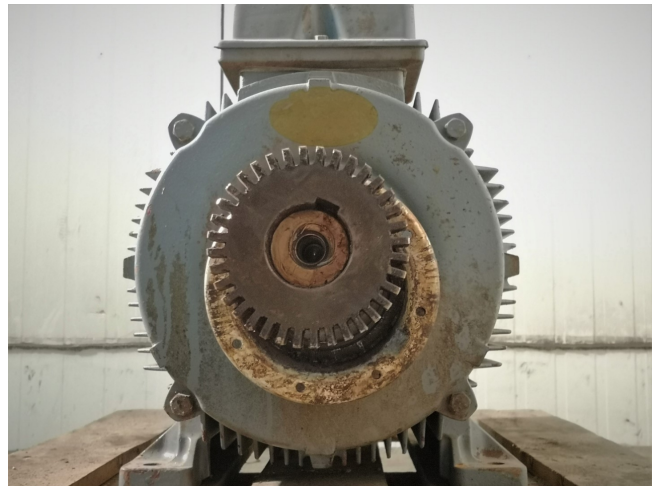
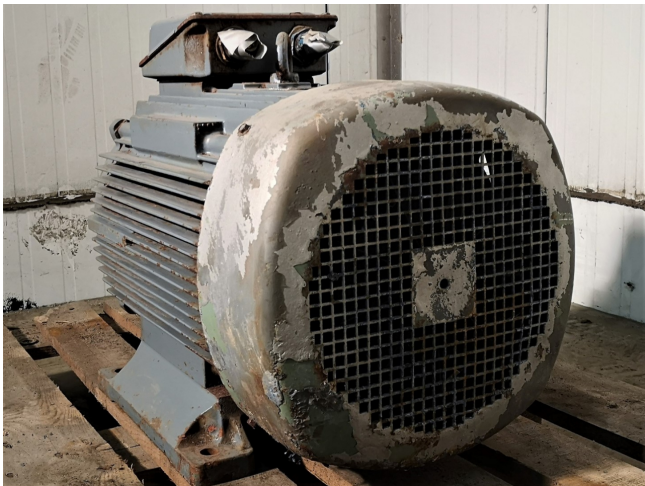
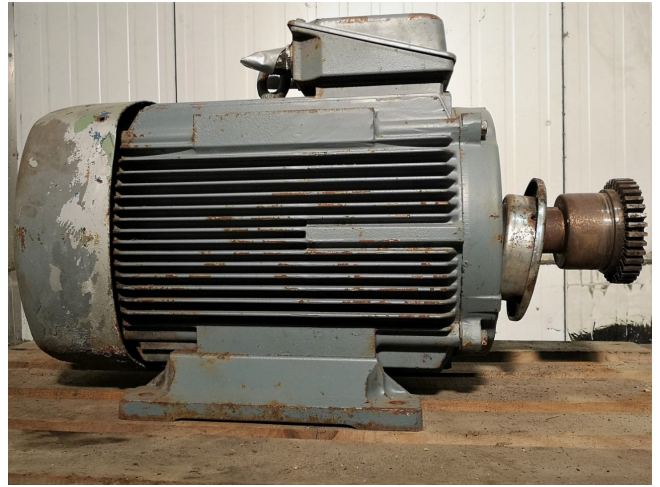
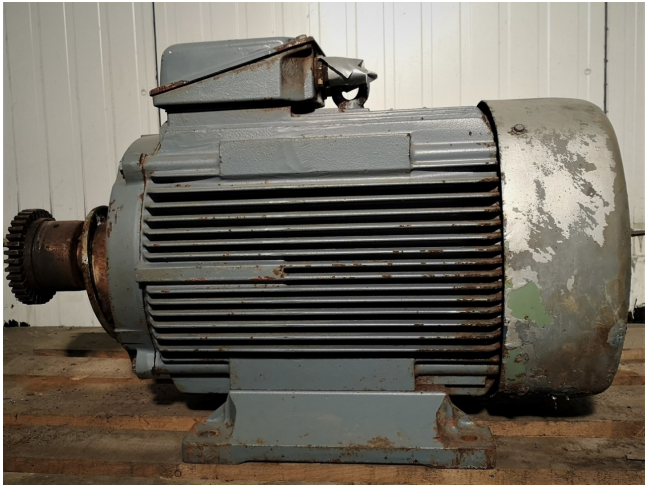
Brand	VEM Motors
Type	K21R 225 M4 HW
kW	45
RPM	1470
Size & Weight	800x370x470mm (LxWxH) / 300 kg
50 Hz / 60 Hz	50 Hz
Stock	1



Description

Used VEM Motors K21R 225 M4 HW

Used VEM electric motor. Type: K21R 225 M4 HW. with 45 kW and 1465/1470 RPM at 50 Hz or 54 kW and 1770 RPM at 60 Hz. Sizes: 800x370x470mm (LxWxH). Weight: 300 kg.



V	Hz/c/s	cosφ	A	min ⁻¹ /r.p.m./rev/m	kW
400/690A/Y 50		0,86	81/47	1470	45
380, 420A	50	0,86, 0,83	96,5, 80	1465, 1475	
660, 690Y	50	0,86, 0,85	50, 47	1465, 1470	
480A	60	0,85	82	1770	53
460, 500A	60	0,86, 0,83	85,5, 84	1770, 1775	

CE VEM motors GmbH Wernigerode Made in Germany
 3 ~ Mot. Nr./No./M. F2 IR 225 M4 HW
 WKL/Ins.cl./Cl.d'isol. F IP 55 300 kg
 30509 7 3 E
 DIN IN 60034-1/11.95
 IM B3 99.02